

Green Line Update  
TT2018-1335  
December 6, 2018

Michael Thompson, General Manager, Transportation



# Leadership team



A transit service that improves mobility in existing communities in north and southeast Calgary connecting people and places, and enhancing the quality of life in the city.





# Long-term need

## NORTH



### JOBS

Today  
**38,000**

Opening Day  
**54,000**

Opening Day + 20 years  
**93,000**



### POPULATION

Today  
**171,000**

Opening Day  
**195,000**

Opening Day + 20 years  
**254,000**

## SOUTH



### JOBS

Today  
**111,000**

Opening Day  
**129,000**

Opening Day + 20 years  
**170,000**

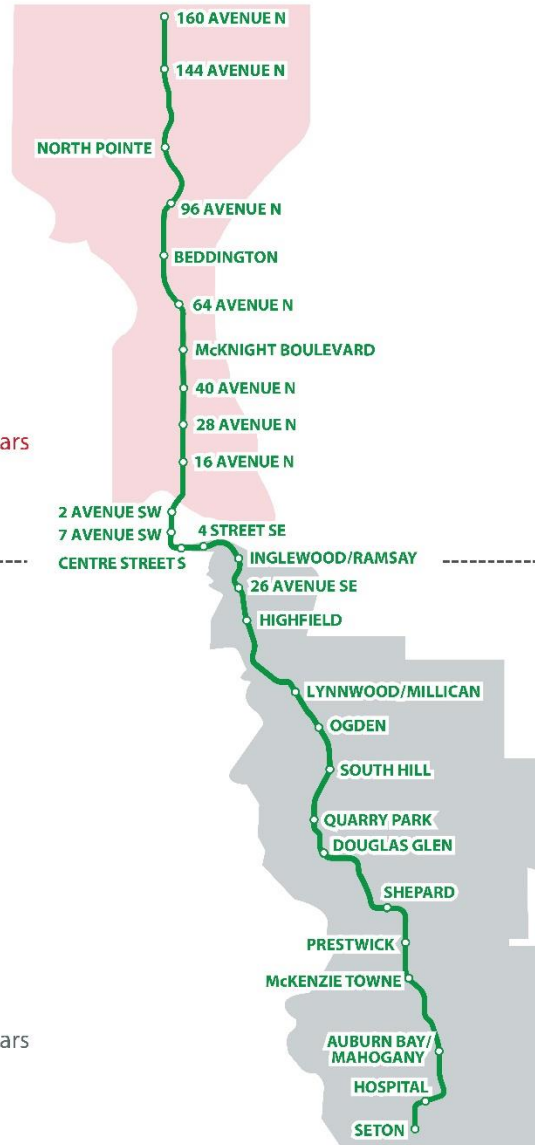


### POPULATION

Today  
**134,000**

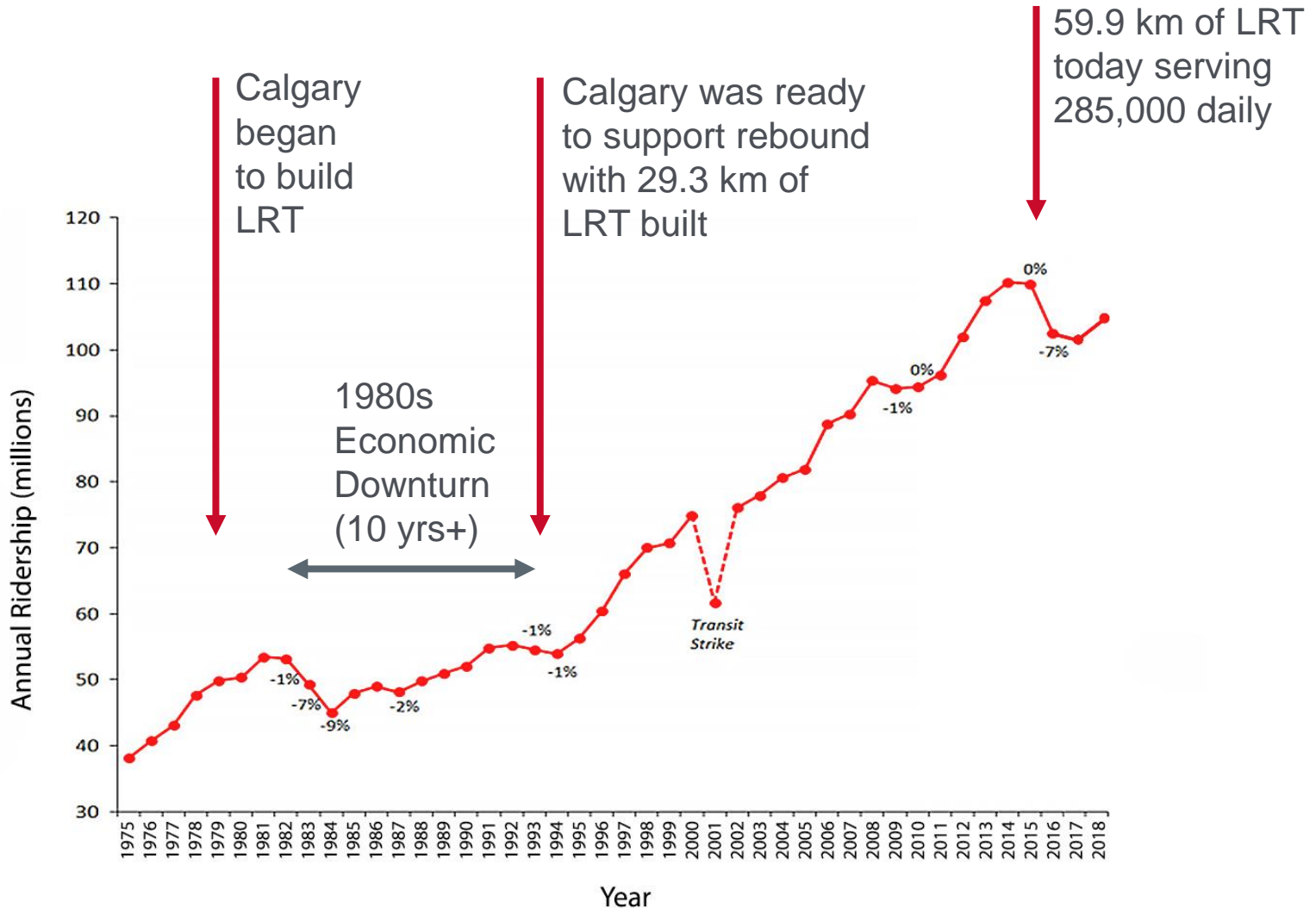
Opening Day  
**200,000**

Opening Day + 20 years  
**242,000**





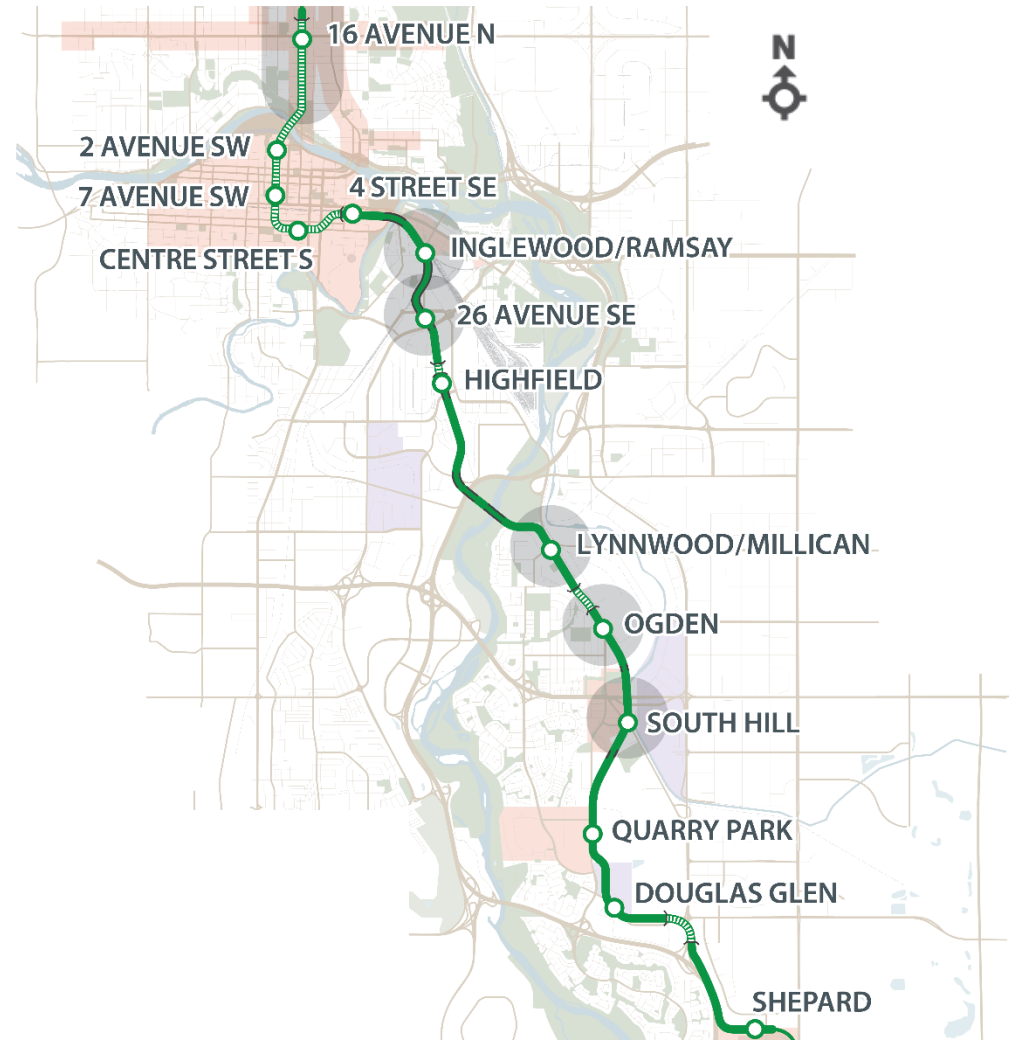
# Why build Green Line today?



# Green Line LRT Stage 1

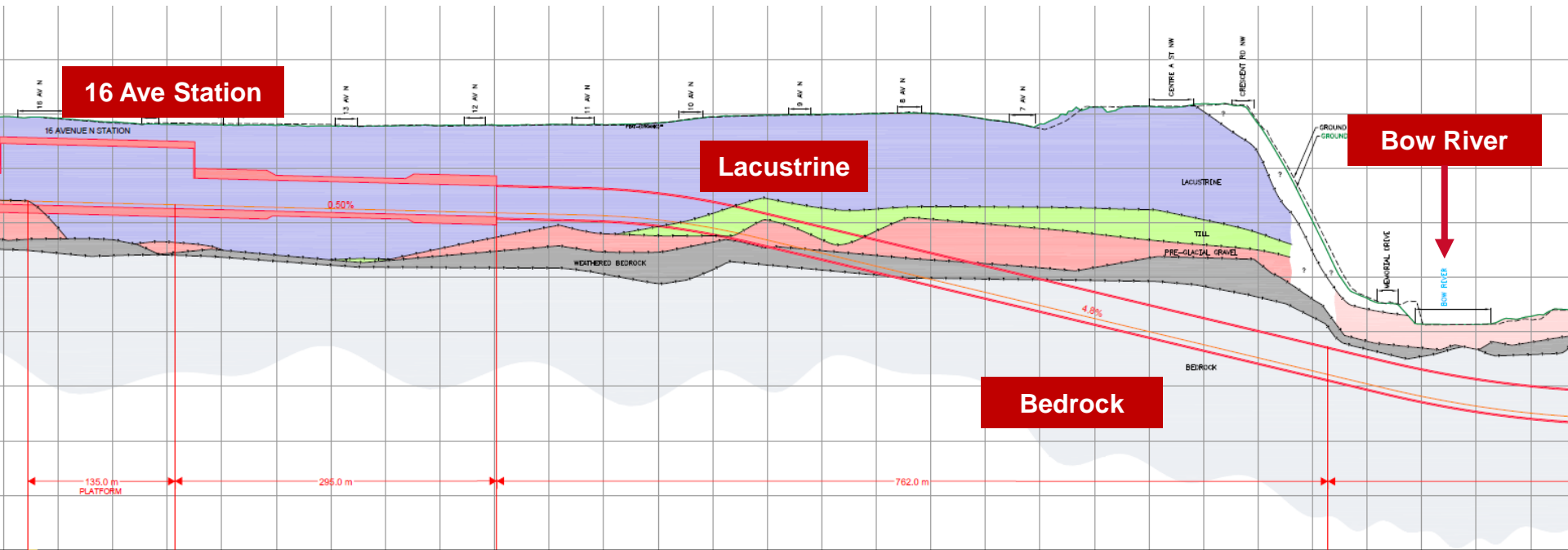
## Stage 1: 16 Avenue N (Crescent Heights) to 126 Avenue S.E. (Shepard)

- Connects to Centre City and to Crosstown BRTs
- MSF at Shepard
- Ensures future expandability
- **60,000 to 65,000** daily transit trips
- Connects existing **60+** Community Services
- Connects **2300+** existing affordable housing units
- Linking to **191,000+** jobs
- **30,000** tonnes GHG reduction
- Adds **4** TOD areas (6 Stations)
- **20 km** ready for construction



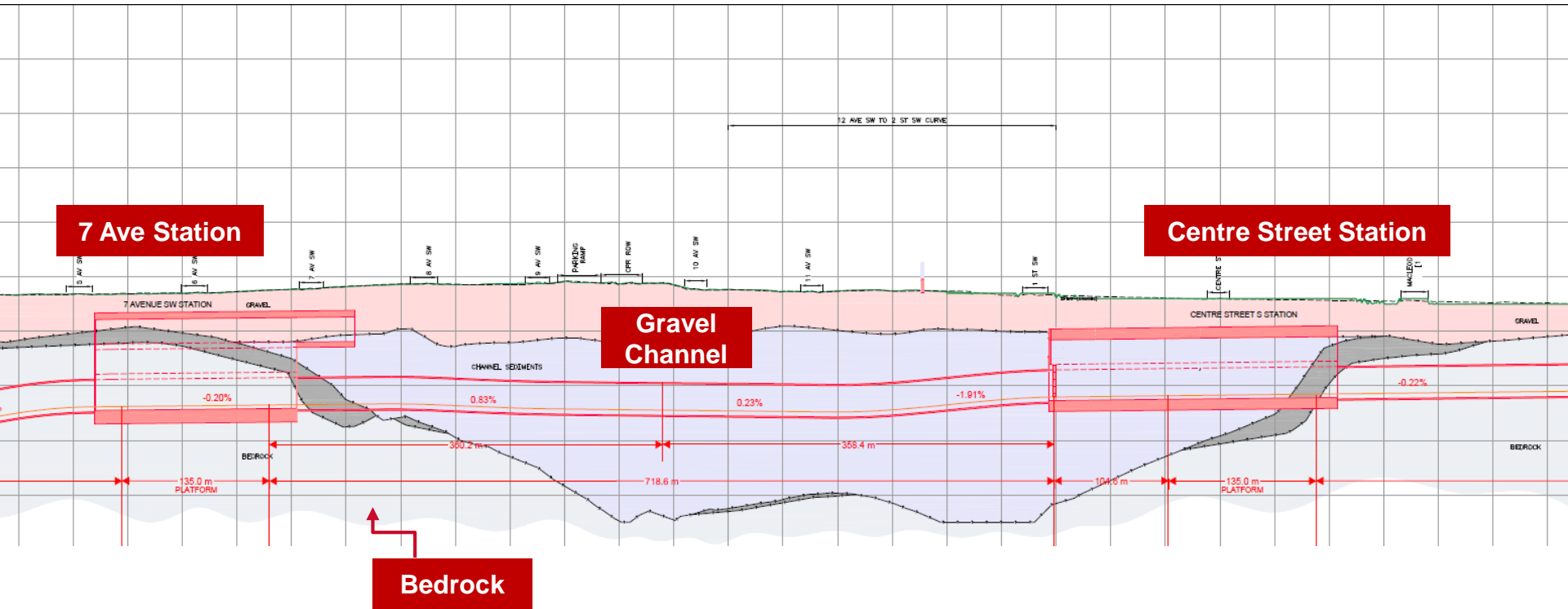


# Soil conditions under the hill/river



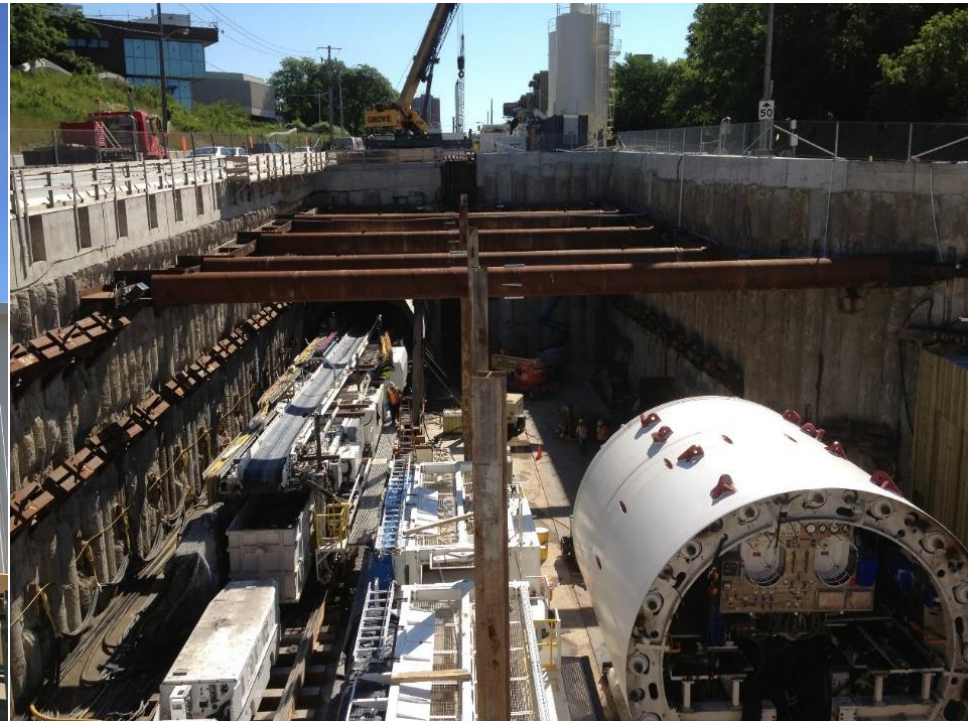


# Soil conditions through downtown Calgary





# Single-bore or twin-bore



# Station construction

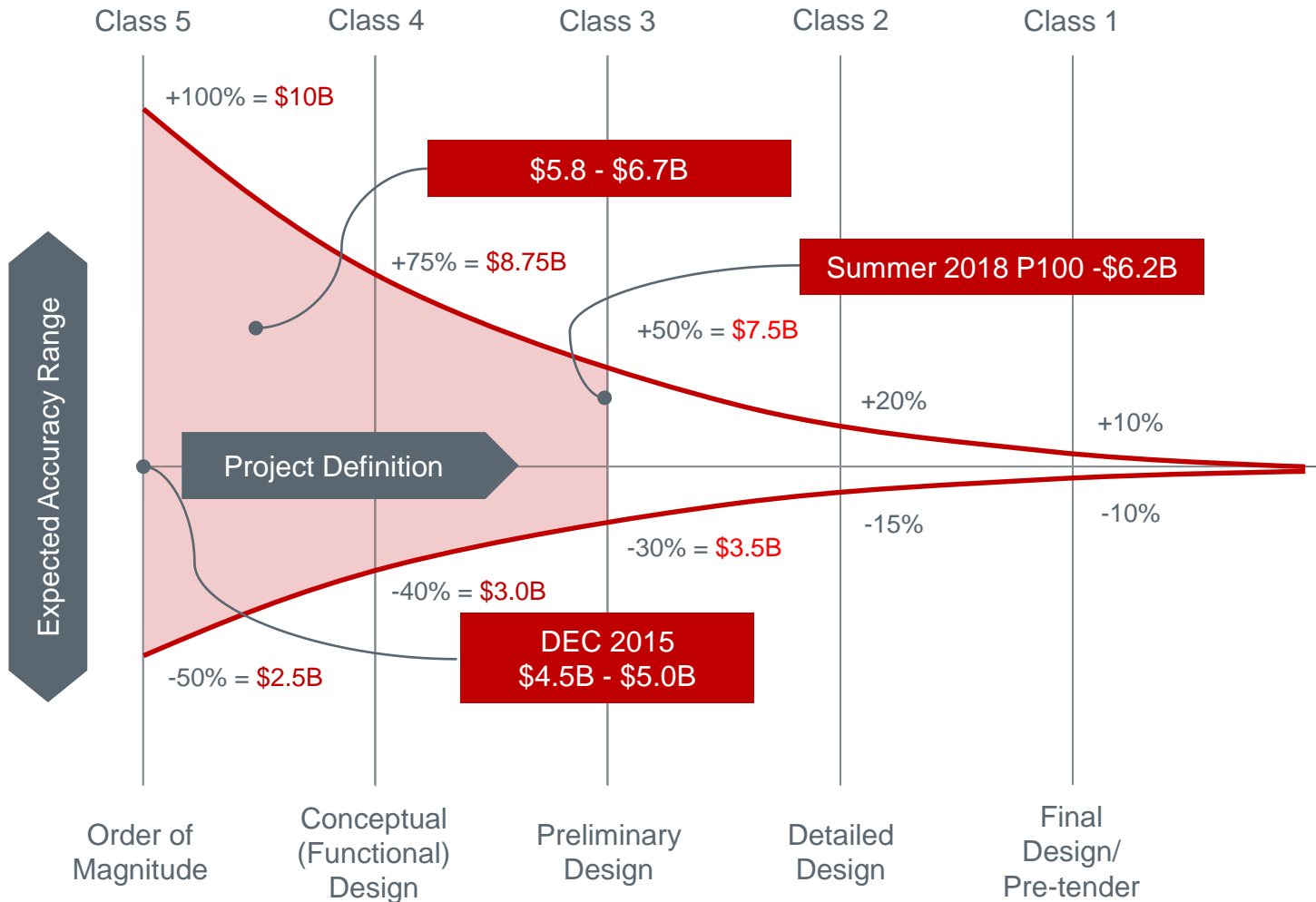


# Station construction



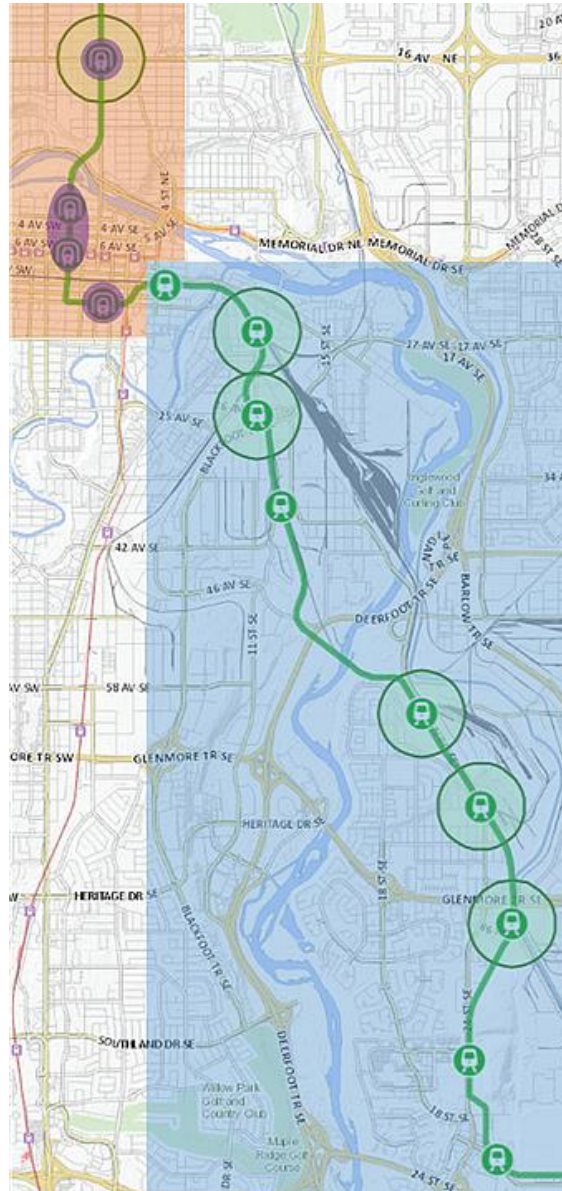


# Today – project cost estimate range





# Procurement strategy





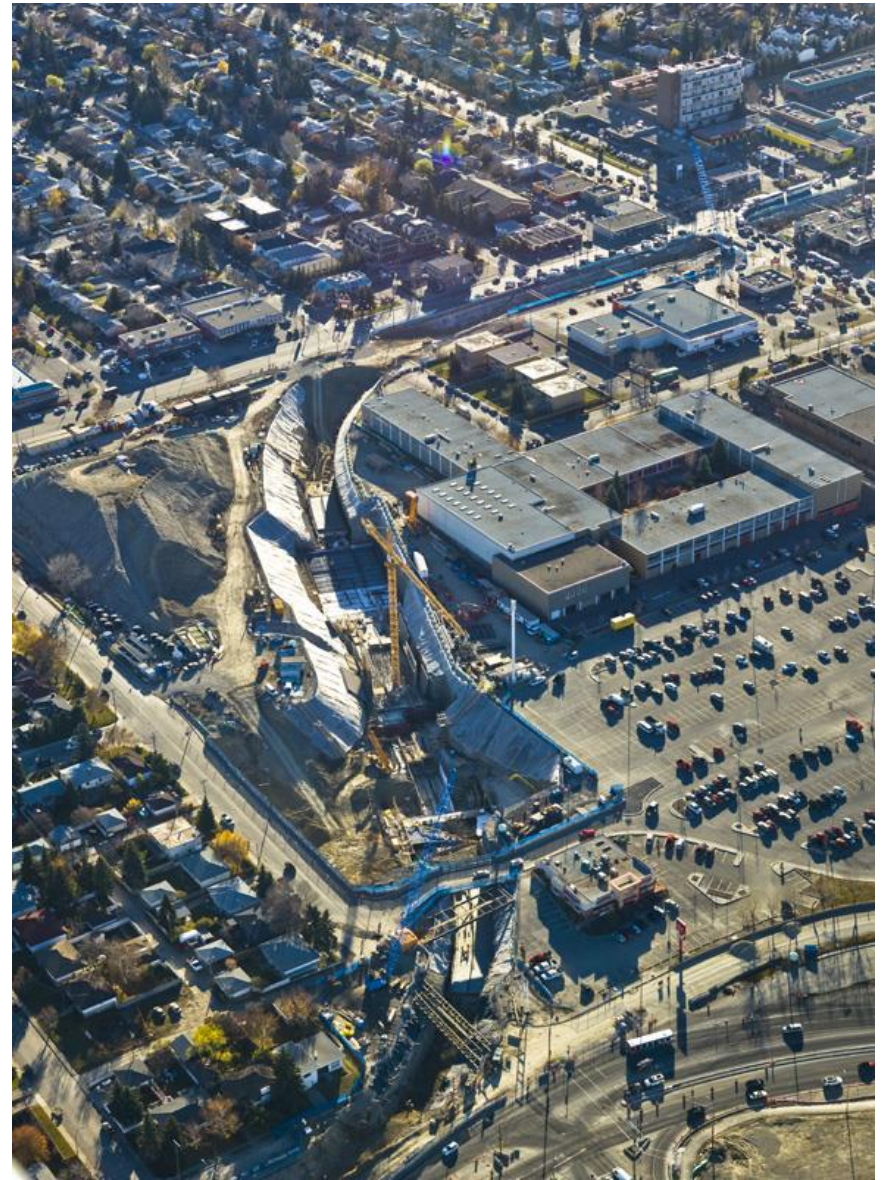
# Team readiness

- Leadership
- Experience with technical risks
- Internal processes limiting agility



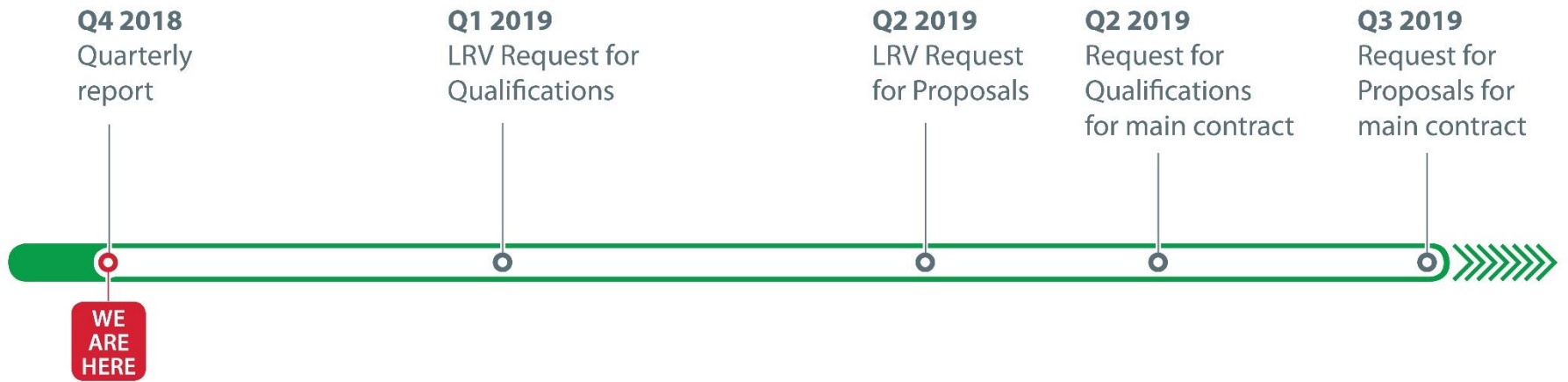
# Project risk recaps

- Downtown Geology
- Downtown Station Construction
- Team readiness





# Project timeline





# Project benefits

- Opening Day in 2026
- 60,000 to 65,000 daily transit trips
- 12,000 direct construction jobs and over 8,000 supporting jobs
- 30,000 tonnes GHG reduction
- Adds 4 TOD areas
- Connects 2300+ existing affordable housing units
- Connects existing 60+ Community Services



A transit service that improves mobility in existing communities in north and southeast Calgary connecting people and places, and enhancing the quality of life in the city.



# Questions?

